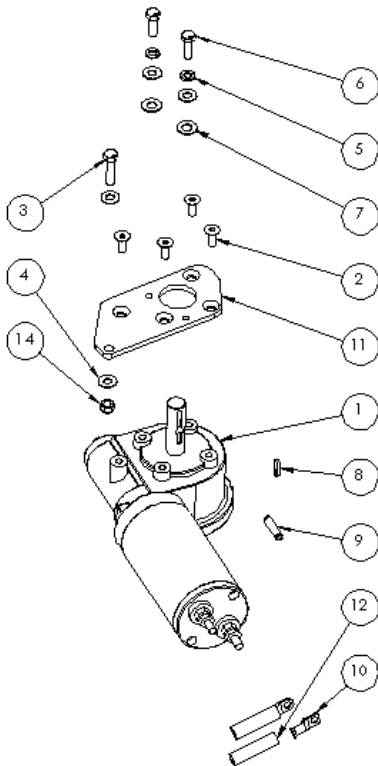
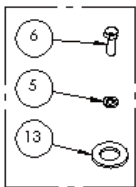


# MOTOR/GEARBOX 90:1 GEN 2 REPLACEMENT PROCEDURE



ITEM NO.	PART NUMBER	DESCRIPTION_EN	QTY.
1	101CA1036	12V MOTOR WITH GEARBOX - GEN 2	1
2	151-09PZFSM8-20	FLAT SOCKET CAP SCREW M8-1.25 X 20MM ZINC	4
3	151-01PZM8-35	ZINC HEX. BOLT M8-1.25 x 35mm	1
4	151-02PZ0005	5/16" STD ZP WASHER	4
5	151-03PZ0005	5/16" ZINC SPRING WASHER	3
6	151-01PZM8-25	ZINC HEX. BOLT M8-1.25 x 25mm	3
7	151-02PZ0006	3/8" STD ZP WASHER	2
8	151CA2089	3/16" SQUARE KEY 3/4" LG	1
9	151-09QCSF516114	SPRING PIN 5/16" X 1 1/14"	1
10	151CA1107	FLARED COPPER LINE ADAPTOR - 5/16" STUD	2
11	521CM0019	FITTING PLATE FOR GEN 2 MOTOR ON PM-1	1
12	151CA1147	1/2" SHRINK TUBE FOR 6-4GA	2
13	151-02PZ0011	3/4" ZP - STD FLAT WASHER	1
14	151-05PZM8125	METRIC LOCK NUT PZ - M8 X 1.25	1

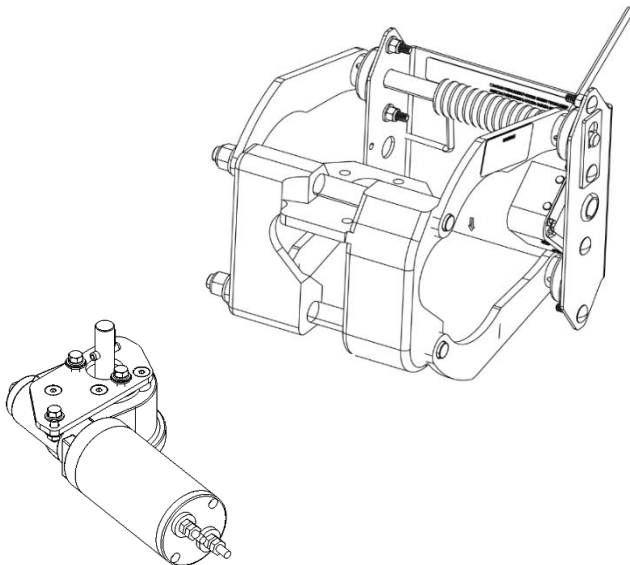


NOTE FOR  
CONFIGURATION B

## Step 1: Choose your trailer's system configuration

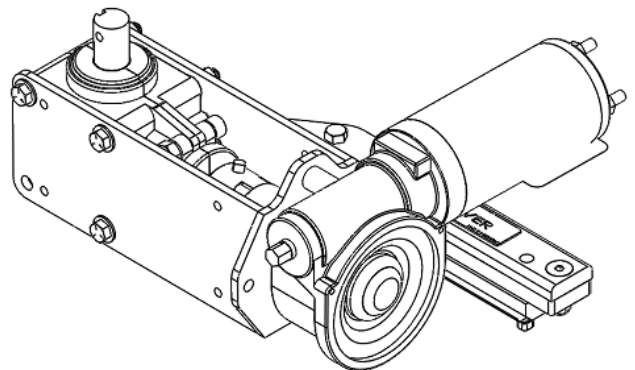
### CONFIGURATION A

A. If you have this mechanism, use all the items above, EXCEPT ITEMS IN THE NOTE FOR CONFIGURATION B.



### CONFIGURATION B

B. If you have this mechanism, use only the following items: 1,4,5,6,8,9,10,12,13 AND NOTE CONFIGURATION B



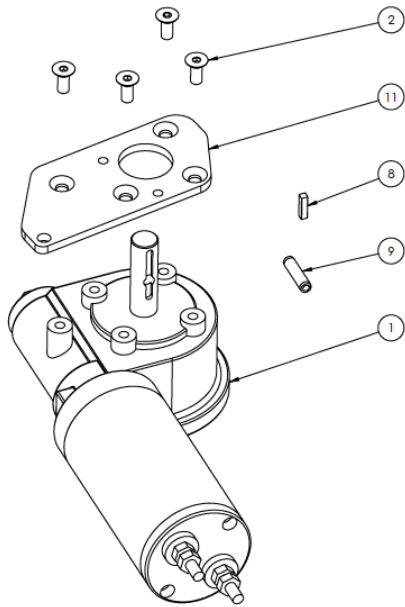
#### Note

Make sure to **replace** the old imperial bolts with the new metric bolts.

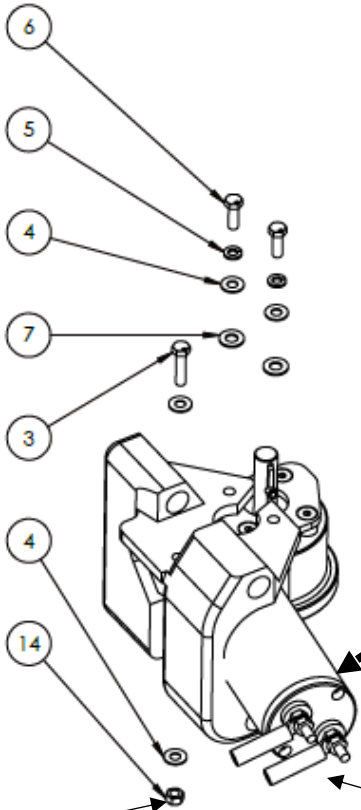


### CONFIGURATION A

Step 2A: After removing the old motor, install the fitting plate, the spring pin and the square key on the new motor/gearbox.



Step 3A: Install the motor/gearbox in the red motor mount.



**Note**  
Make sure to pull firmly the motor into the red mount (away from the trailer)

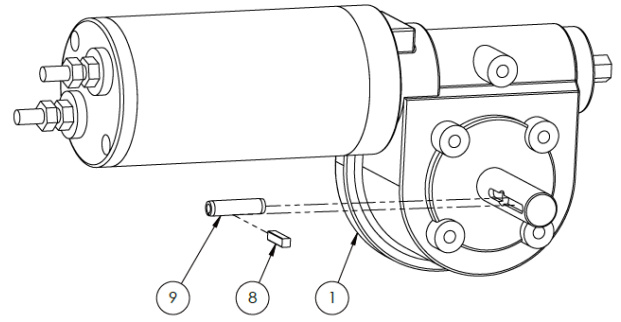
**Note**  
Only tight the nut 15 in last

**Note**  
Replace the existing terminals by 5/16" terminal (10,12)

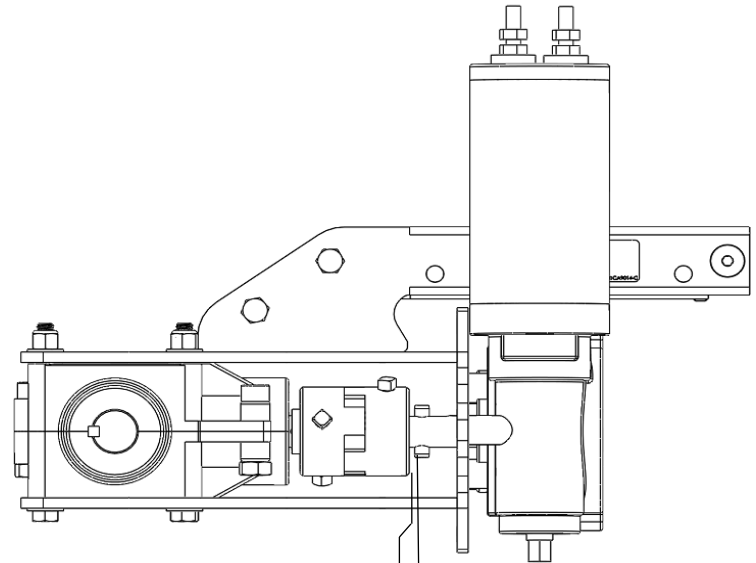


### CONFIGURATION B

Step 2B: After removing the old motor, install the spring pin and square key on the new motor.



Step 3B: Temporarily fit the motor in the bracket and check for a gap between the spring pin and the coupling. IF YES INSTALL THE SPACER (13).



**Note**  
Add the spacer if there is a gap

Step 4B: Secure the motor with the hardware (4.5.6).

